



EnwaMatic®

Side stream filtration and water treatment for closed heating and cooling systems



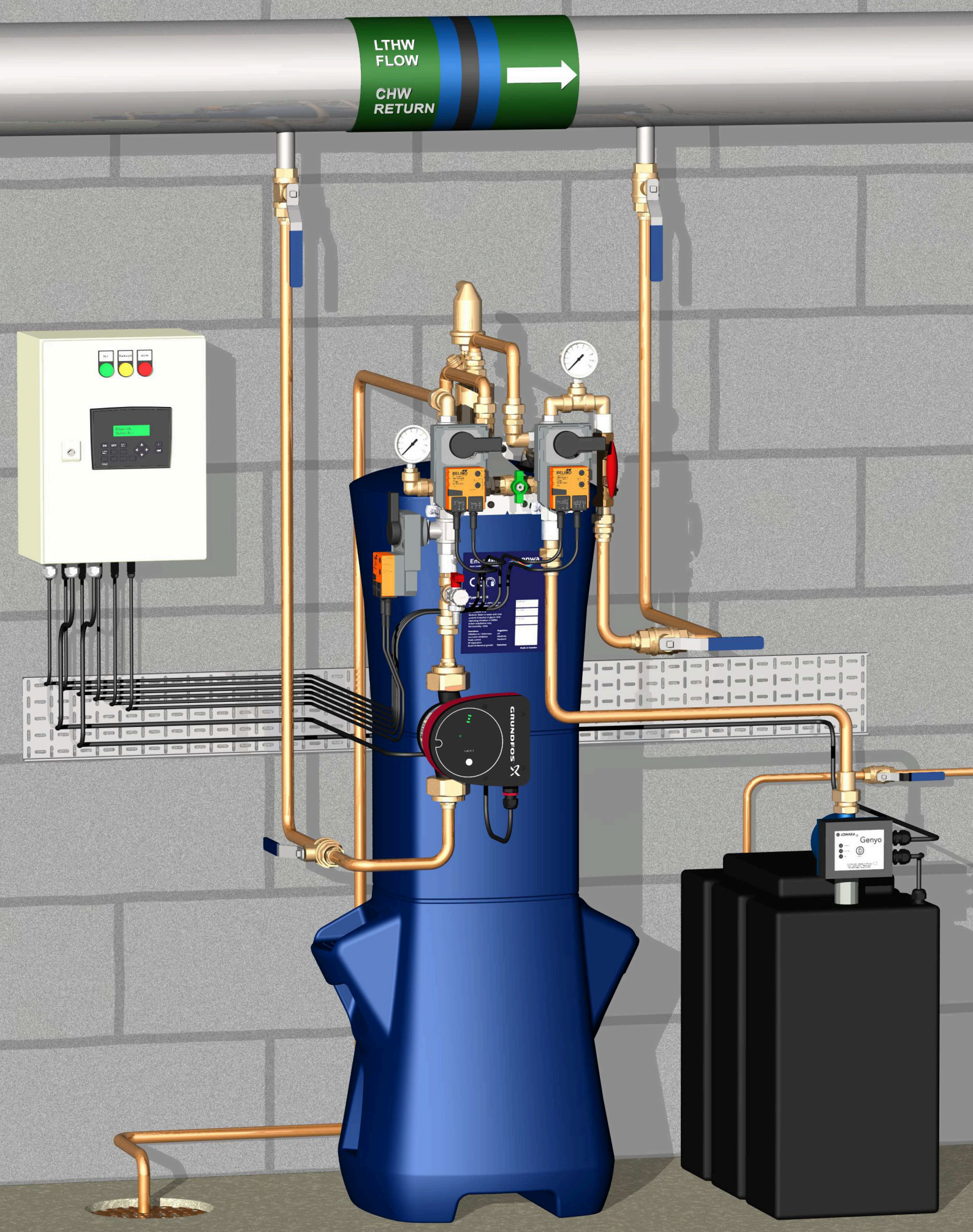
PROTECT
NEW BUILDS



ENHANCE
REFURBISHMENTS



RESTORE
EXISTING SYSTEMS



CLIENTS IN SECTORS INCLUDING:







Data Centres
District Heating
Residential Developments

Schools & Colleges
Pharmaceutical
Hotels

MOD
Airports
Council Housing

Banks
Food Processing
Cruise Ships



-  **Side stream filtration (10 μm)**
-  **pH regulation (9.0 - 10.5)**
-  **Corrosion inhibition**
-  **Scale control**
-  **Air separation**
-  **Restriction of bacterial growth**

-  **Extends system lifespan**
-  **Improves reliability**
-  **Increases energy efficiency**
-  **Reduces maintenance cost**
-  **Green technology**
-  **Improves Health & Safety**

CLIENTS IN SECTORS INCLUDING:

Hospitals
Manufacturing
Royal Navy

Police Stations
Exhibition Centres
Stately Houses

Universities
HM Prisons
Shopping Centres

Rail Projects
Leisure Centres
Maritime Oil & Gas



	System Volume (m3)	Equivalent kW	Flow Rate (l/min)	Dimensions W * D * H (mm)	Weight Full (KG)	Inlet Outlet	MCW Inlet Drain
EM 825	0 - 5	0 - 400	3 - 7	597 * 477 * 1440	60	DN20	DN20
EM 1252	5 - 15	400 - 1250	10 - 15	597 * 477 * 1640	150	DN20	DN20
EM 1260	15 - 40	1250 - 3330	25 - 30	597 * 477 * 1940	180	DN20	DN20
EM 1665	40 - 80	3330 - 6660	60 - 80	697 * 577 * 2054	325	DN25	DN25
EM 1672	80 - 130	6660 - 10,830	90 - 110	697 * 577 * 2254	390	DN40	DN25

Insulated stainless steel vessels to 10 bar, 95 C.

Bespoke units for larger system volumes, high temperatures (140 C) and high pressures (25 bar).

Filter Only options for systems with Aluminium.

Automated backwash options.

Glycol retaining automated backwash option.

Mini / Midi systems for volumes < 1500 litres.

Fluid Category 4 / 5 breaktank / booster assemblies for backwash water supply.

Volt free BMS outputs, with Modbus RS485 option.



BESPOKE EM BS 1252 - PN16



Members of:

Clean Water Norway
Association of water treatment companies

